

HIGOLD®

Cabinet door rebounder

Installation manual



Cabinet door rebounder

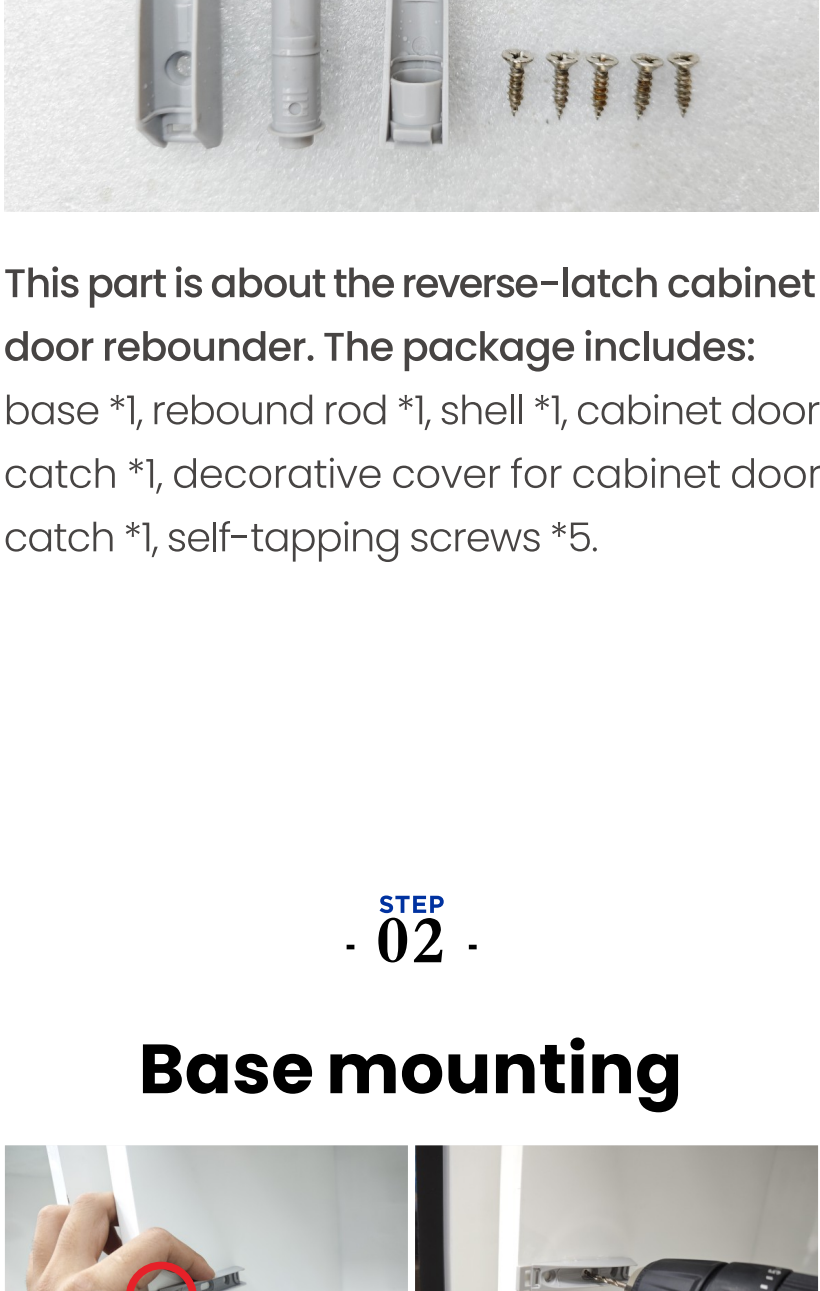
HIGOLD®

Leading design Perfect experience The beauty of industrial design



STEP - 01 -

Packing list



This part is about the reverse-latch cabinet door rebounder. The package includes:

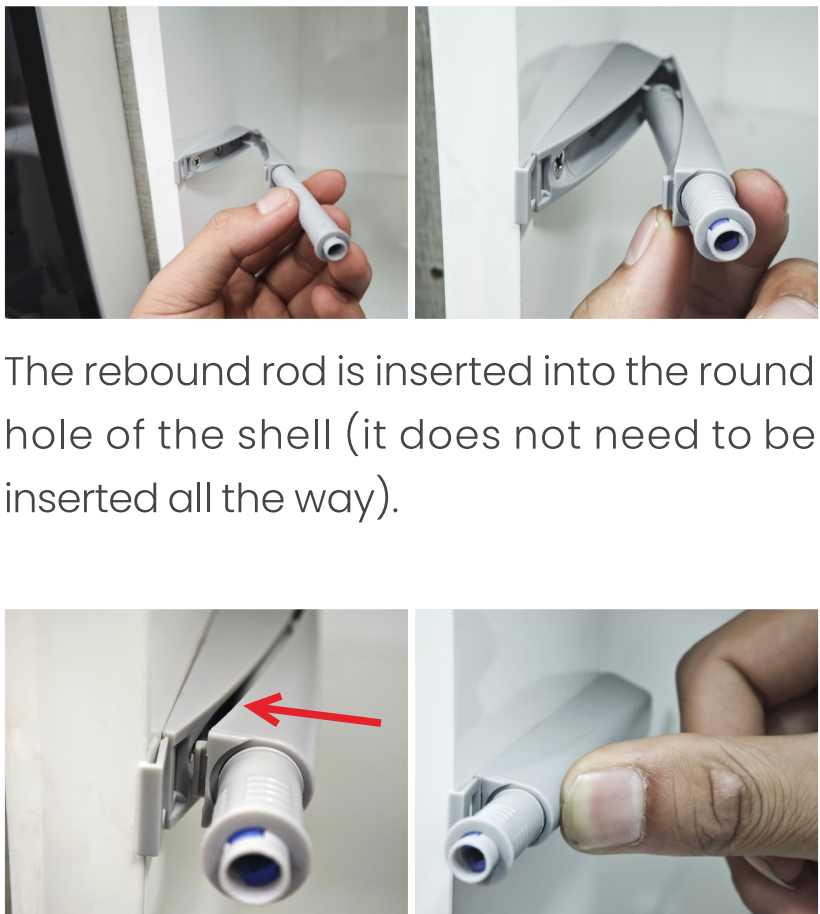
base *1, rebound rod *1, shell *1, cabinet door catch *1, decorative cover for cabinet door catch *1, self-tapping screws *5.

STEP - 02 -

Base mounting



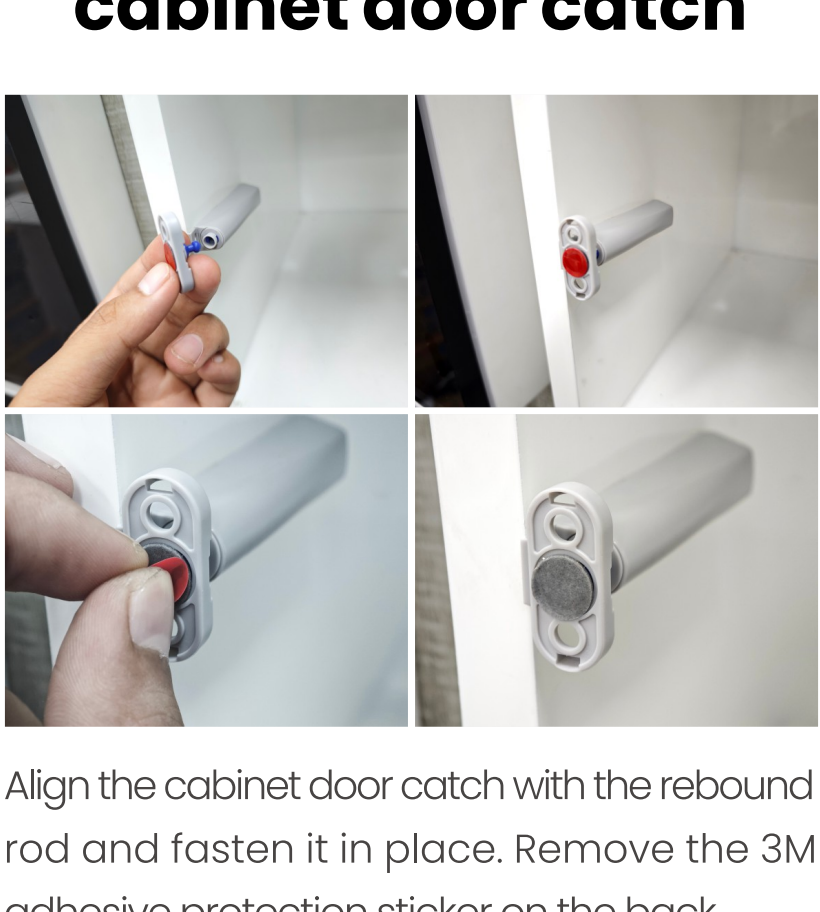
Select the installation position of the rebounder (the rebounder can be installed along the edge). Align the base horizontally and the positioning frame to the cabinet edge, and drill holes in advance for the base hole.



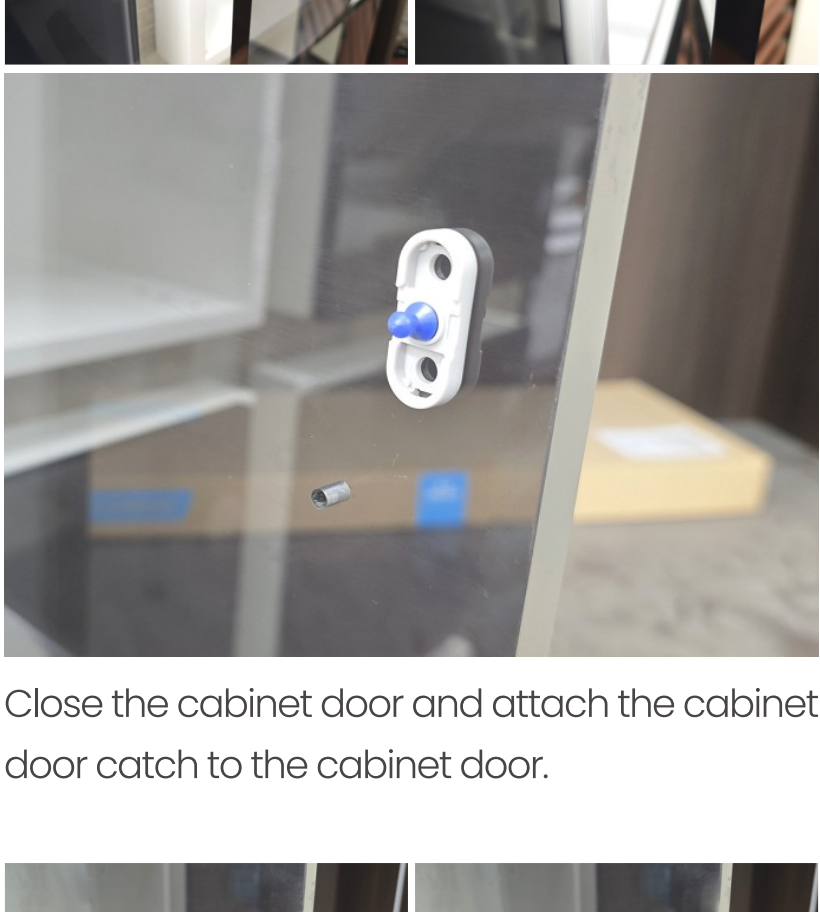
Align the pre-drilled hole and use 3 self-tapping screws to fix the base. The base installation is completed.

STEP - 03 -

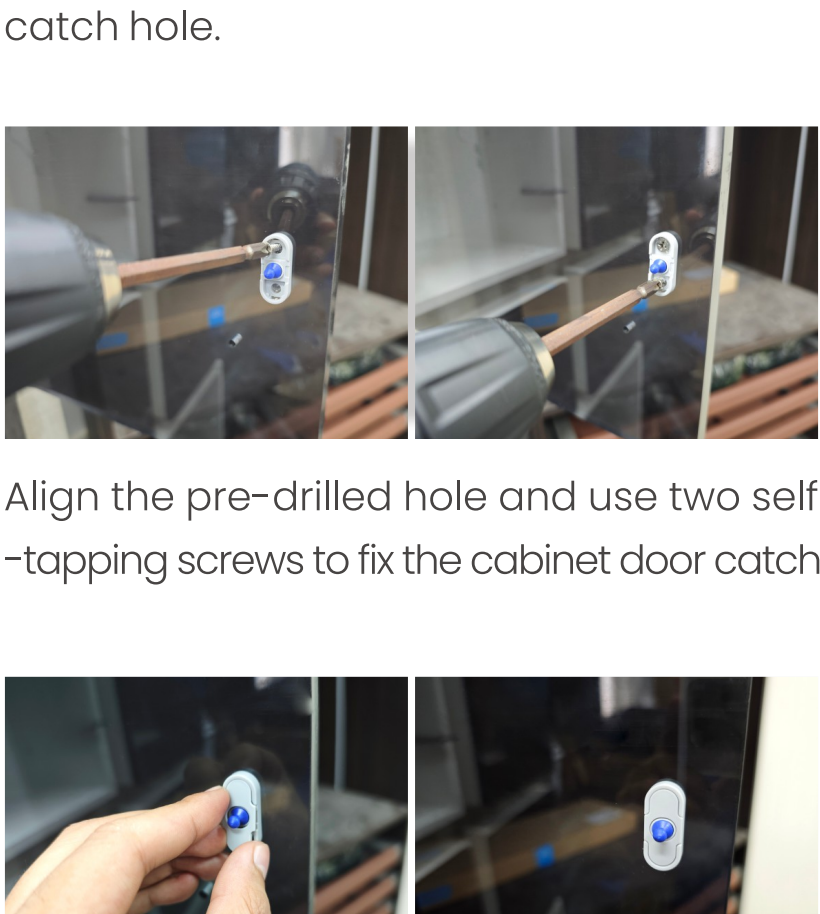
Installation of the rebound rod



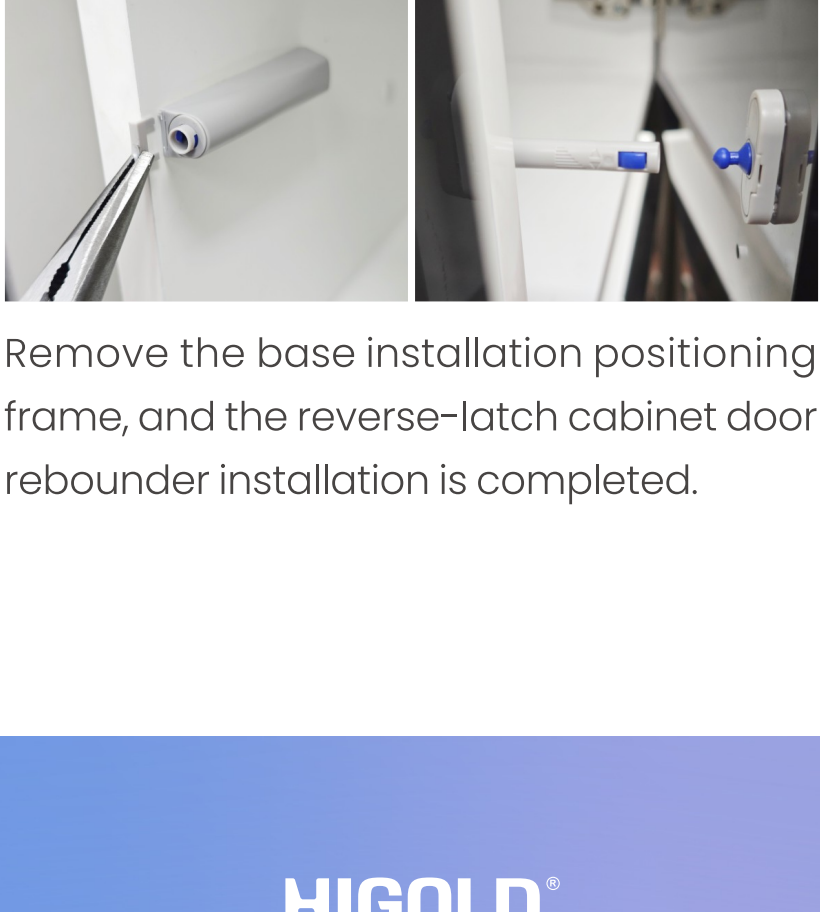
Fasten the tail hook of the shell into the tail groove of the base.



The rebound rod is inserted into the round hole of the shell (it does not need to be inserted all the way).



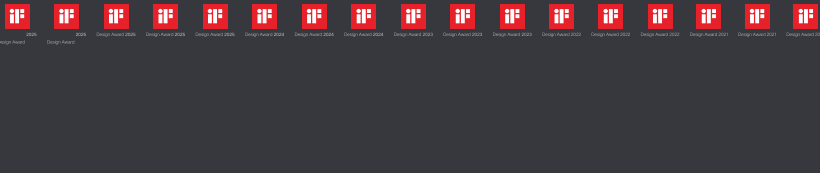
Press the front clip of the shell against the base slot and press down to fasten the shell.



Press the rebound rod to the bottom, and the installation of the rebound pole is completed.

STEP - 04 -

Installation of the cabinet door catch



Align the cabinet door catch with the rebound rod and fasten it in place. Remove the 3M adhesive protection sticker on the back.

Close the cabinet door and attach the cabinet door catch to the cabinet door.

Drill holes in advance for the cabinet door catch hole.

Align the pre-drilled hole and use two self-tapping screws to fix the cabinet door catch.

Fasten the cabinet door catch to the decorative cover, and the cabinet door catch installation is completed.

Remove the base installation positioning frame, and the reverse-latch cabinet door rebounder installation is completed.

HIGOLD®

Original Design & Quality

